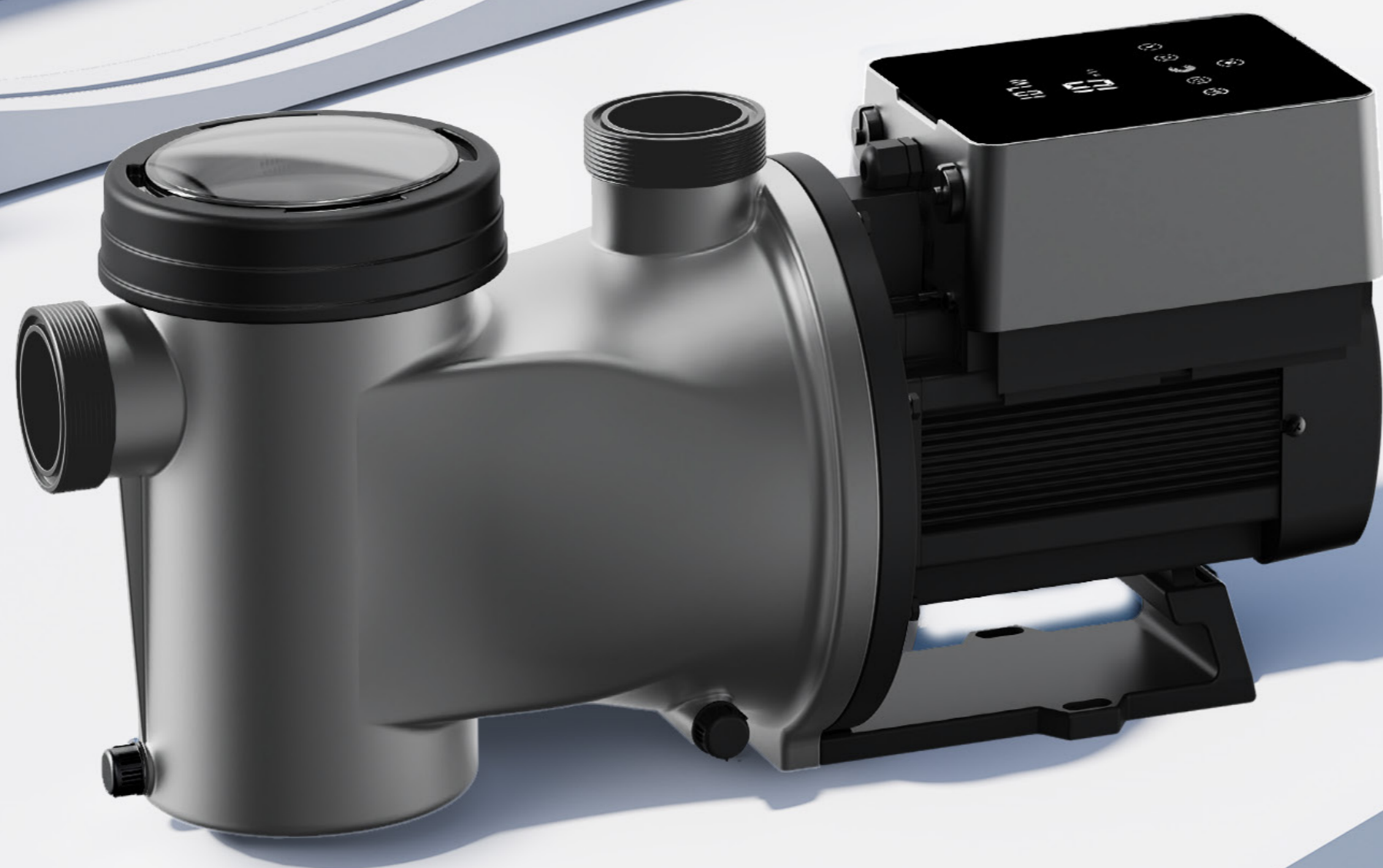


AQUAGEM®

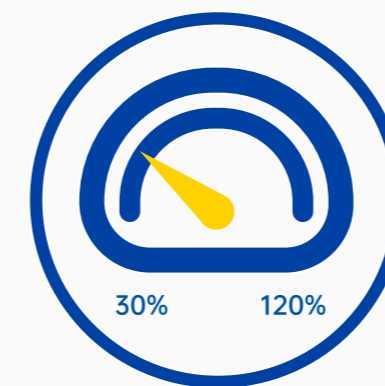


UP TO **15** TIMES
ENERGY-**SAVING**

InverCaptain

InverSilence Technology

Thanks to InverSilence technology, the motor speed can be controlled precisely. And with high-efficiency DC brush-less motor, the pump is very energy-saving and quiet. In daily use, to reach the best filtration effect, it is recommended to let the pump run at a small flow, which is extremely quiet and energy-efficient.



Full inverter controller

The inverter drive can precisely control the pump speed. It allows the running capacity to be adjusted between 30~120%.



DC brush-less motor

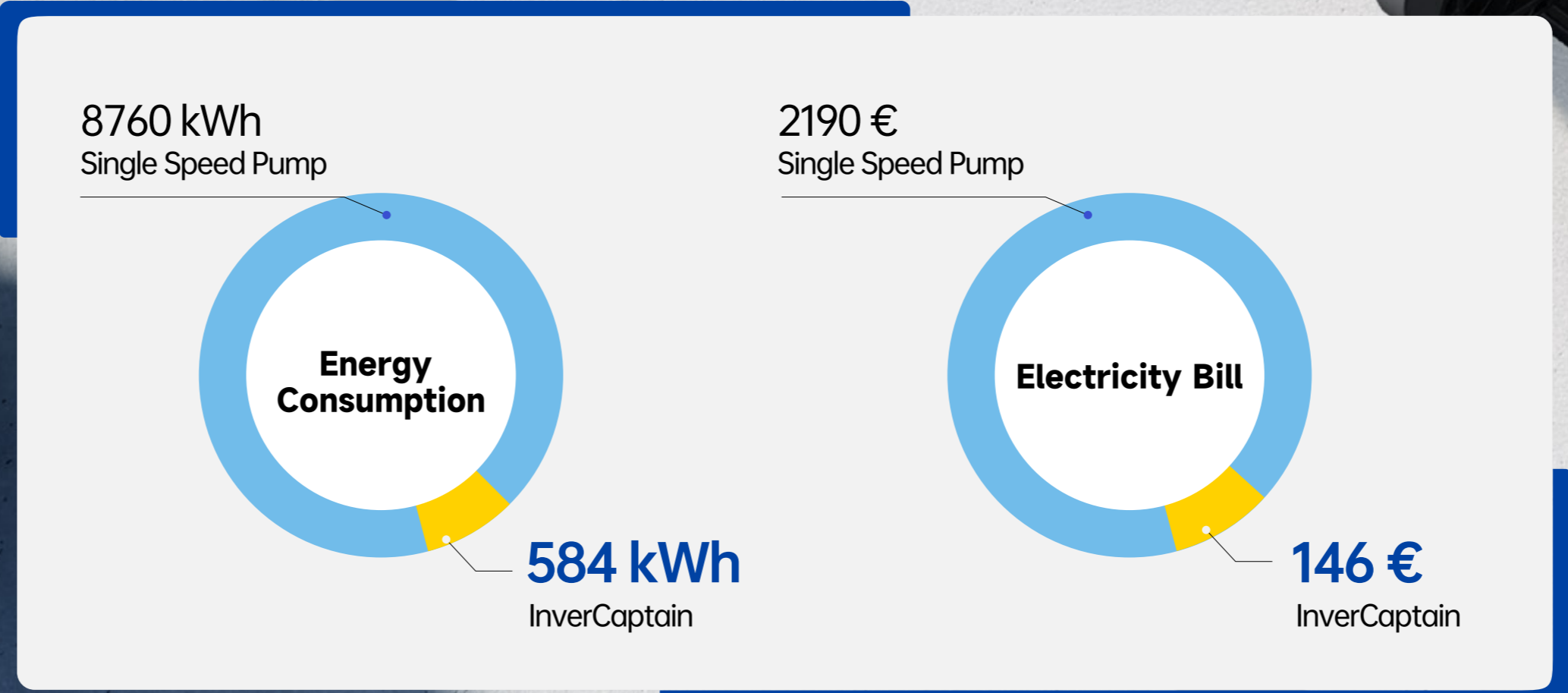
DC brushless motor ensures the pump much less noise, higher efficiency and more durability.



1.5kW
Q@8m:25m³/h
Single Speed Pump



1.2kW
Q@8m:247m³/h
InverCaptain



Assumption: A 4-season pool averagely runs for 16 hours in 365 days. Electricity price is €0.25/kWh

Down to 33dB(A)

Apart from the Inverter Technology, the IE4 DC brush-less motor makes the noise down to 33dB(A)@1m, which is 30 times more silent compared to single speed pump.



InverCaptain



On/off pump



30db(A)

40db(A)

50db(A)

60db(A)

70db(A)



Quiet bedroom at night



Refrigerator



Moderate Rainfall



Washing machine

Intuitive Touch Controller



AI/MI Mode

Auto Inverter Mode:

After setting the flow rate, the pump can adjust the running capacity automatically to reach the set flow.

Manual Inverter Mode:

Running capacity can be set from 30% ~ 120% manually



Power consumption reading



One-click backwash



WiFi function included



Other Features



External control optional :

RS485 modbus, Digital input, Relay output



Soft Start

Start from 0 amp to rated amps steadily



Efficiency class of motor: IE4



IP rating: IP55



Suitable for sea water pool



Technical Parameter

Model	Advised pool volume (m ³)	P1 (kW)	Voltage (V/Hz)	Current (A)	Qmax (m ³ /h)	Hmax (m)	Circulation Flow (m ³ /h) (Max)	
							10m	8m
DCP08	30-50	0.80	220-240/50/60	3.7	25.0	19.0	14.5	19.0
DCP12	40-70	1.20		5.5	29.0	21.0	23.0	27.0
DCP15	50-80	1.50		6.9	35.0	22.0	30.0	33.0
DCP18	70-100	1.80		8.2	41.0	23.0	34.0	37.0

Overall Dimension

Packing Dimension (mm)
648*270*340

Performance Curve

